

# APPETIZERS

<b>TEMPURA SHRIMP</b>	5.95
5pcs. Battered Shrimp served with Tempura Sauce	
<b>FRIED CALAMARI</b>	7.95
Crispy Battered Calamari served with Garlic Miso Sauce	
<b>SHUMAI</b>	5.95
6pcs. Steamed Shrimp Dumplings	
<b>GYOZA</b>	4.95
5pcs. Deep Fried Pork Dumplings	
<b>CREAMY SHRIMP</b>	6.95
Shrimp and Cream Cheese wrapped in Crispy Wonton	
<b>EGG ROLL</b>	4.95
2pcs. of Pork, Shrimp, & Vegetable filled Egg Rolls	
<b>SPRING ROLL</b>	5.95
5pcs. of Deep Fried Spring Rolls with Sweet Chili Thai Sauce	
<b>TEMPURA VEGETABLES</b>	5.95
5pcs. Battered Assorted Vegetables served with Tempura Sauce	
<b>AGEDASHI TOFU</b>	7.95
Panko battered Deep Fried Tofu with Tempura Sauce	
<b>MOZZARELLA TEMPURA</b>	6.95
Mozzarella & Asparagus wrapped in Deep Fried Wonton	
<b>HEART ATTACK</b>	7.95
Deep fried, Spicy Tuna and Cream Cheese stuffed Jalapeno	



将軍  
**Shōgun**

# SOUPS


<b>WONTON SOUP</b>	4.00
<b>MISO SOUP</b>	2.00
<b>ONION SOUP</b>	2.00
<b>CLAM MISO SOUP</b>	4.00



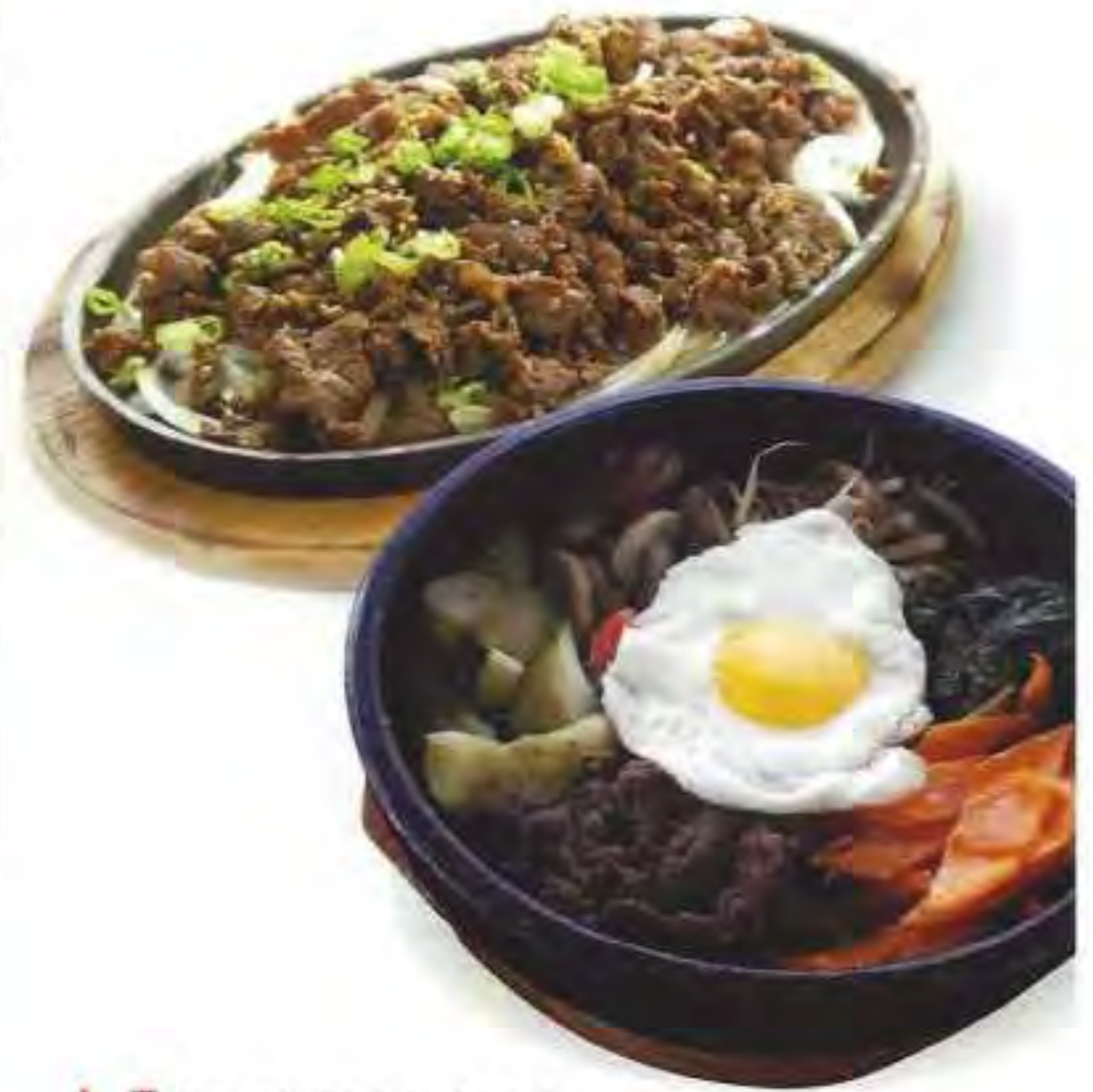
# SALADS

<b>HOUSE SALAD</b>	2.95
Garden Salad with Ginger Dressing	
<b>OCTOPUS SALAD</b>	5.50
Marinated Octopus mixed with Vegetables	
<b>SUNOMONO SEAFOOD SALAD</b>	8.95
Thinly sliced Cucumber & Seafood with Sweet Soy Vinaigrette	
<b>SMOKED SALMON ASPARAGUS SALAD</b>	11.95
Asparagus & Cream Cheese Rolled into slices of Smoked Salmon & placed over a Spring mix Salad	
<b>SEAWEED SALAD</b>	4.50
Japanese Hiyashi Wakame Salad	
<b>SPICY SASHIMI SALAD</b>	11.95
Assorted Sashimi with House Spicy Sauce	
<b>TUNA TATAKI</b>	12.95
Seared Tuna over a Spring Mix with Ponzu Sauce	
<b>BEEF TATAKI</b>	12.95
Served NY Strip on Spring Mix with Ponzu Sauce	

*Items may differ from pictures.*

[www.facebook.com/shogunfayetteville](http://www.facebook.com/shogunfayetteville) 

18% Gratuity may be added to parties of 6 or more.



## HOUSE SPECIAL

Includes Steamed Rice and a choice of House salad or Onion soup  
Substitute Fried Rice for \$2.

- |  |   |
|--|---|
| <b>BULGOGI</b>   | <b>13.95</b>                              |
| Thinly sliced ribeye steak marinated in a sweet garlic soy sauce                                   |   |
| <b>PORK KATSU</b>  | <b>13.95</b>                              |
| Breaded and Deep fried Pork Loin Cutlet served with Katsu Sauce                                    |   |
| <b>CHICKEN KATSU</b>   | <b>13.95</b>                              |
| Breaded and Deep Fried Chicken Breast Cutlet served with Katsu Sauce                               |   |
| <b>DOLSOTBOB</b>   | w/o meat <b>9.95</b> w/ meat <b>12.95</b> |
| Traditional Korean hot stone rice bowl, served with seasoned vegetables and traditional hot sauce. |   |
| <b>B.B.Q. SHORT RIBS (GALBI)</b>   | <b>15.95</b>                              |
| Prime Short Ribs Marinated in a Korean Style B.B.Q. Sauce  |   |
| <b>SPICY CHICKEN BULGOGI</b>   | <b>12.95</b>                              |
| Tender Chicken marinated in a red chili sauce  |   |

## NOODLES

### YAKI SOBA

Chicken **8.95** / Beef **10.95** / Seafood **13.95** / Vegetable **7.95**

### YAKI UDON


Chicken **9.95** / Beef **11.95** / Seafood **13.95** / Vegetable **7.95**



## SOUP ENTRÉES

- |   |              |
|---|--------------|
| <b>CHICKEN UDON</b>                                 | <b>10.95</b> |
| <b>SEAFOOD UDON</b>                                 | <b>13.95</b> |
| <b>TEMPURA UDON</b>                                 | <b>10.95</b> |
| <b>SOONDOOBOO (SPICY TOFU SOUP)</b>                 | <b>12.95</b> |
| Spicy Silken Tofu Soup with Vegetables and Seafood. |              |

*Items may differ from pictures.*

[www.facebook.com/shogunfayetteville](http://www.facebook.com/shogunfayetteville) 

18% Gratuity may be added to parties of 6 or more.

# HIBACHI ENTRÉES

Each Entrée includes House Salad, Onion Soup, Hibachi Vegetables, Noodles, 2pcs Shrimp & Steamed Rice.  
Substitute Fried Rice for \$2.

TEPPANYAKI CHICKEN	15.95
HIBACHI SHRIMP	19.95
SHOGUN SALMON	19.95
HIBACHI LOBSTER	23.95
VEGETABLE DINNER	14.95
NEW YORK STRIP STEAK	19.95
HIBACHI SCALLOPS	20.95
FILET MIGNON	21.95
HOT HONEY CHICKEN	16.95



# SIDE ORDERS

CHICKEN	6.95
NEW YORK STEAK	8.95
SHRIMP	9.95
SUKIYAKI STEAK	9.95
SALMON	8.95
FILET MIGNON	10.95
LOBSTER	14.95
SUSHI RICE	2.00
MUSHROOMS	4.95
VEGETABLES	4.95
NOODLES	4.95
STEAMED RICE	2.00

# HIBACHI COMBINATIONS



Each Entrée includes House Salad, Onion Soup, Hibachi Vegetables, Noodles, 2pcs Shrimp & Steamed Rice.  
Substitute Fried Rice for \$2.

STEAK & CHICKEN	21.95
STEAK & LOBSTER	28.95
STEAK & SHRIMP	23.95
STEAK & SALMON	23.95
STEAK & SCALLOP	23.95
CHICKEN & SALMON	21.95
CHICKEN & VEGETABLE	17.95
CHICKEN & SHRIMP	21.95
SHRIMP & SCALLOP	23.95
SHRIMP & VEGETABLE	19.95
FILET MIGNON & CHICKEN	23.95
FILET MIGNON & LOBSTER	29.95
FILET MIGNON & SCALLOP	25.95
FILET MIGNON & SHRIMP	25.95
SHOGUN SPECIAL	33.95
<i>Shrimp, Scallop, and Lobster</i>	
ADD PLATE	7.95

Includes a House salad, Onion soup, Hibachi Vegetables & Steam Rice



*Items may differ from pictures.*

[www.facebook.com/shogunfayetteville](http://www.facebook.com/shogunfayetteville)  

18% Gratuity may be added to parties of 6 or more.

# KID'S MENU

10 years old or Under. Kid's Menu Entrées include House Salad, Hibachi Vegetables, Noodles, & a Choice of Steamed or Fried Rice.

CHICKEN	6.95
STEAK	7.95
SUKIYAKI STEAK	7.95
SHRIMP	8.95
HOT HONEY CHICKEN	7.95
VEGETABLES	5.95



# FRIED RICE

Double meat add 3.95

VEGETABLE	6.95
CHICKEN	8.95
BEEF	9.95
SHRIMP	9.95
COMBO	12.95

Chicken, Beef & Shrimp



# RAMUNE

Japanese Traditional Sodas.  
Ask server for flavors

3.25

- STRAWBERRY
- LYCHEE
- MELON
- GRAPE
- PLAIN



# BEVERAGES

2.25

## SOFT DRINKS

Coke, Diet Coke, Sprite, Dr.Pepper, Raspberry Tea, RootBeer, Lemonade

## ICE TEA

Sweet Tea & Unsweet

## GREEN TEA



# DESSERTS

ICE CREAM	3.00
MOCHI ICE CREAM	4.00
CHEESE CAKE	5.00
TEMPURA ICE CREAM	5.00
FRESH FRUIT PLATE	5.00



Items may differ from pictures.

[www.facebook.com/shogunfayetteville](http://www.facebook.com/shogunfayetteville)



18% Gratuity may be added to parties of 6 or more.